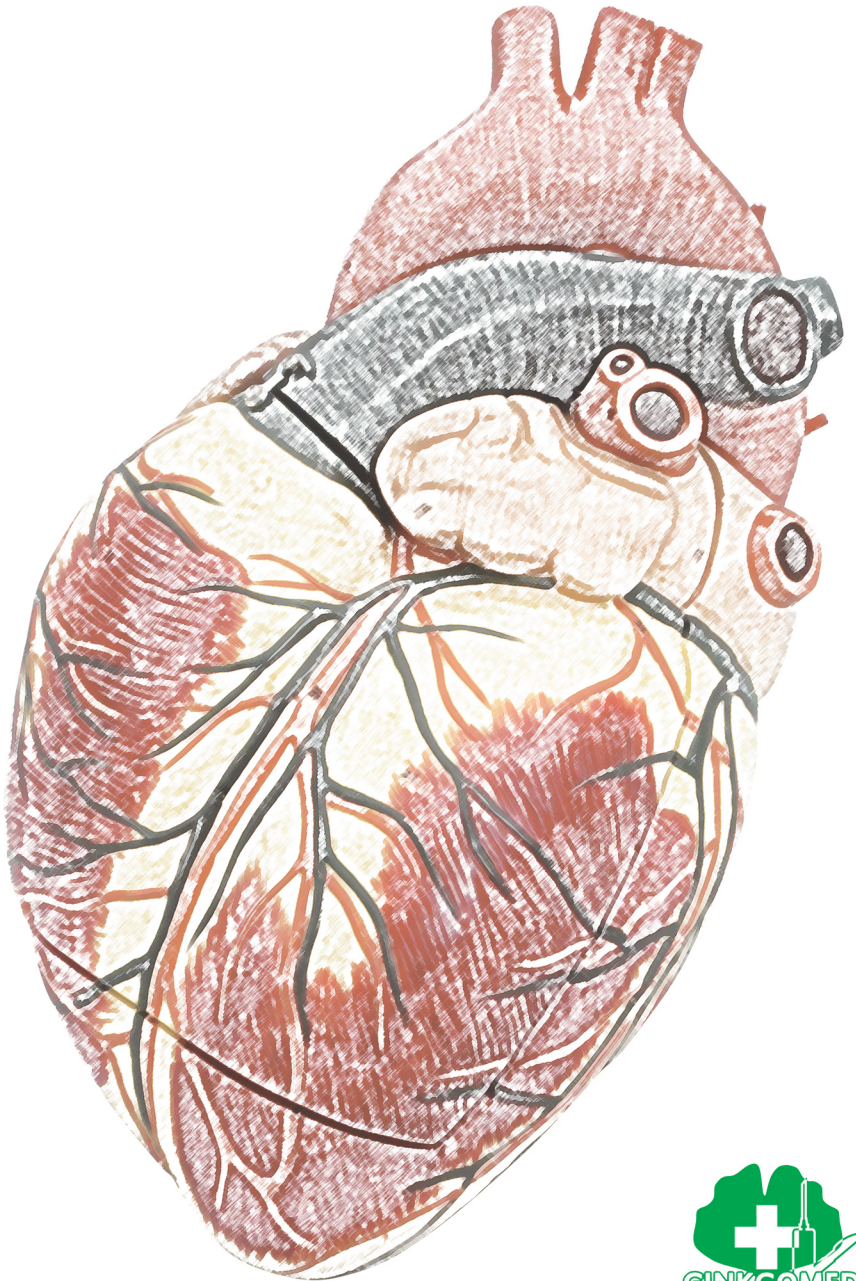
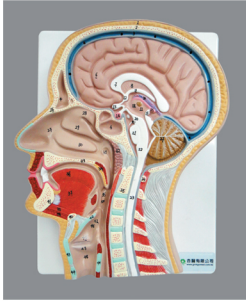


TEACHING MODELS



GM-080001

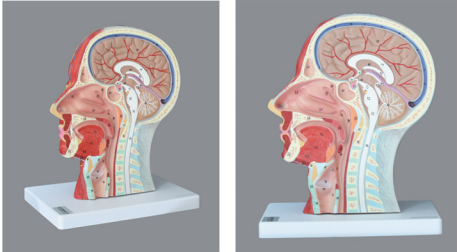
Sagittal Section of Head



This PVC relief model shows a mid-sagittal section of head and neck.

GM-080002

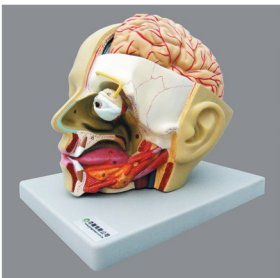
Half Head and Neck



A representation of half head and neck through a mid-sagittal section, PVC, life size.

GM-080003

Head with Brain, 4 parts



A representation of human head with brain, PVC, disassemblable into 4 parts, life size.

GM-080004

Brain with Arteries



A representation of human brain with attached arteries, PVC, disassemblable into 9 parts, life size.

GM-080005

Eyeball



A representation of human eyeball, PVC, disassemblable into 6 parts, 3X enlarged.

GM-080006

Enlarged Eyeball



A representation of human eyeball, PVC, disassemblable into 6 parts, 6X enlarged.

GM-080007

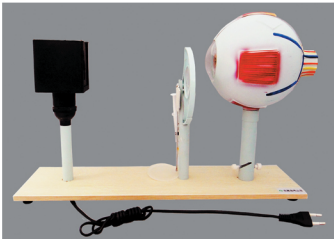
Ear Anatomy, 3 parts, 3X enlarged



A representation of human ear, PVC, disassemblable into 3 parts, 3X enlarged.

GM-080009

Demonstration of Eye Function



This model is composed of an adult eye, light source, correctable lens, image screen and a base. It is not only used to show the eye structure, but also to demonstrate formation of a visual image, how myopia and hyperopia are caused and how to correct.

GM-080011

Functional Areas of Brain



A representation of human brain with functional area indicated by colors, PVC, disassemblable into 2 parts, life size.

GM-080012

Composite Brain



A representation of human brain, PVC, disassemblable into 32 parts, 1/2 life size.

GM-080013

Enlarged Brain



A representation of human brain, PVC, disassemblable into 4 parts, 2X enlarged.

GM-080014

Neuron



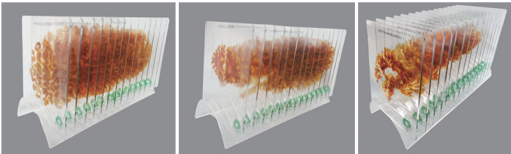
A representation of neuron, PVC, composed of 2 parts, 2,500X enlarged.

GM-BS001 Illustrative Brain Stem



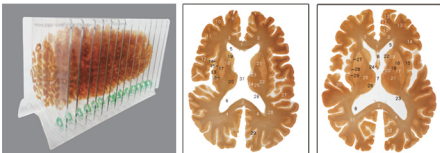
It is made of soft PVC, showing external features and internal organization of tracts and nuclei, with 70 labels.

GM-BSD001 Acrylic Duplicates of Transparent Brain Slices



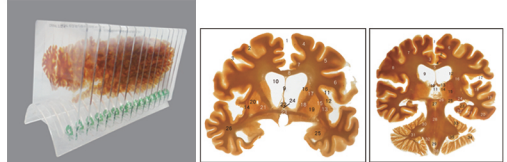
These duplicates are made from transparent embedment of horizontal, coronal and sagittal cut brain slices, 15 slices per cutting, 45 slices in total, numbered labels on slices, with instruction manual and storage case.

GM-BSD002 Acrylic Duplicates of Horizontal Brain Slices



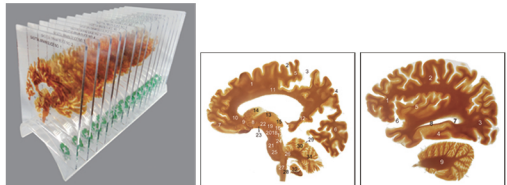
These duplicates are made from transparent embedded slices cut horizontally, 15 slices per set, numbered labels on slices, with instruction manual and storage case.

GM-BSD003 Acrylic Duplicates of Coronal Brain Slices



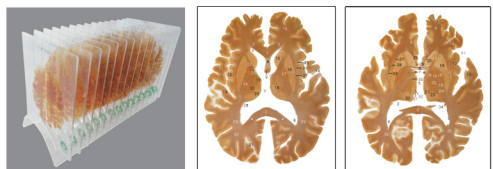
These duplicates are made from transparent embedded slices cut coronally, 15 slices per set, numbered labels on slices, with instruction manual and storage case.

GM-BSD004 Acrylic Duplicates of Sagittal Brain Slices

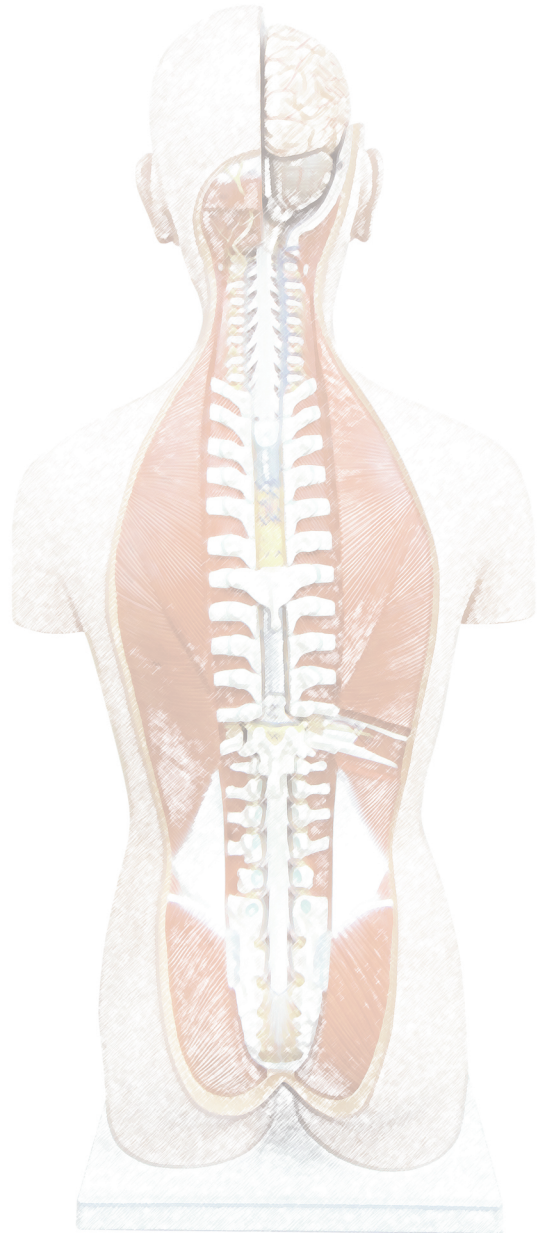
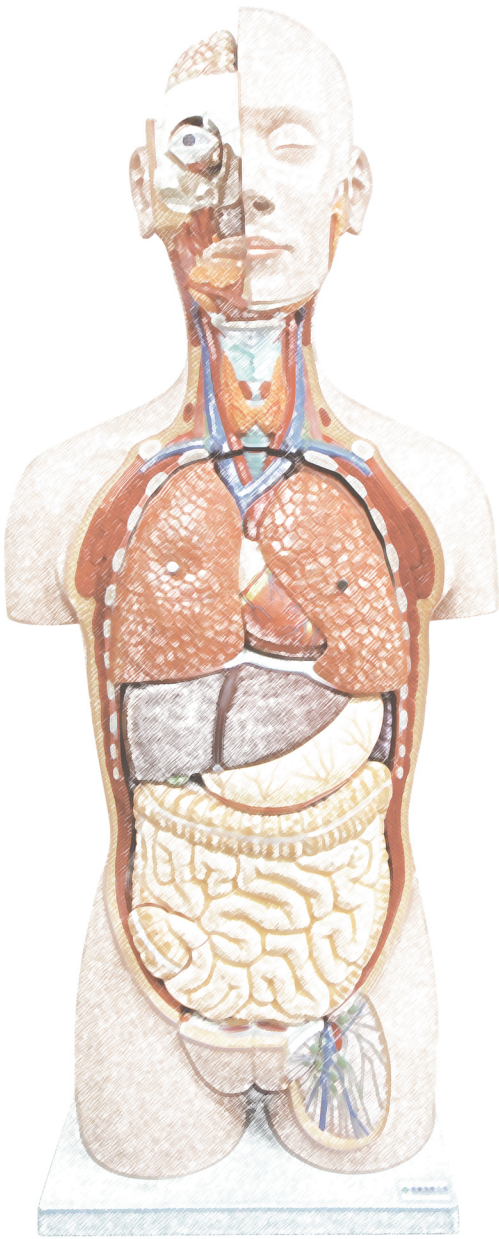


These duplicates are made from transparent embedded slices cut sagittally, 15 slices per set, numbered labels on slices, with instruction manual and storage case.

GM-BSD005 Acrylic Duplicates of CT-25 Brain Slices



These duplicates are made from transparent embedded slices cut at an angle of 25 degree up from horizontal plane, similar to CT scanning, 15 slices per set, numbered labels on slices, with instruction manual and storage case.



GINGKOMED COMPANY

Tel: +886-2-27041032

Fax: +886-2-27040645

<http://www.gingkomed.com.tw>

E-mail: info@gingkomed.com.tw

11-1, No.5, Sec.2, An-He Road, Da-An District, Taipei City (106), Taiwan